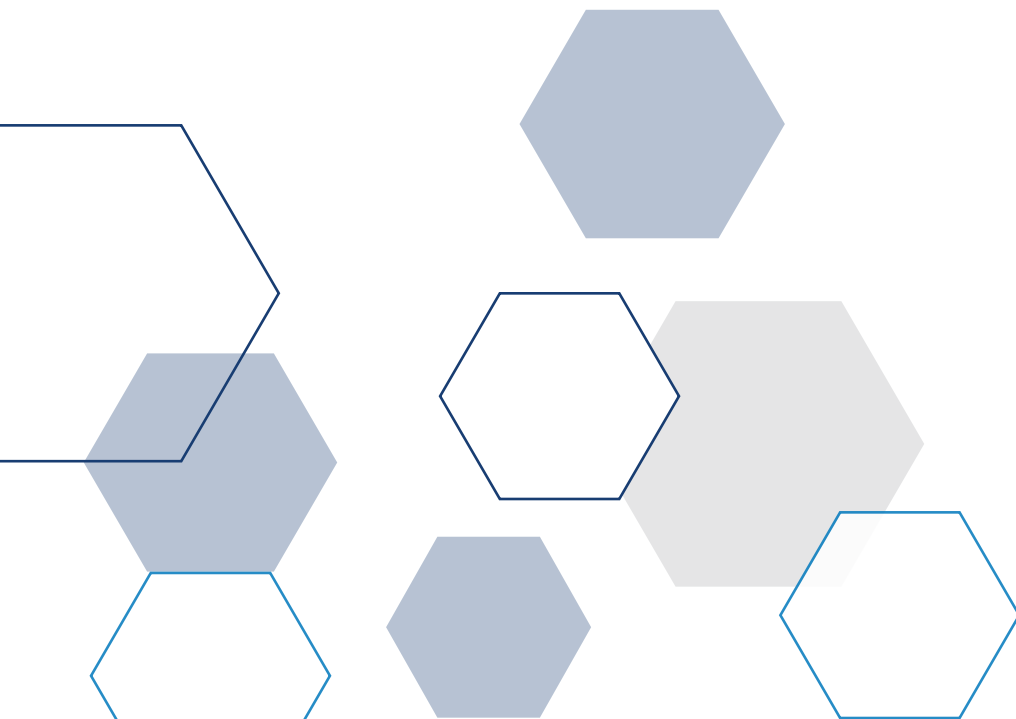


GoodFellow

Your global supplier for materials

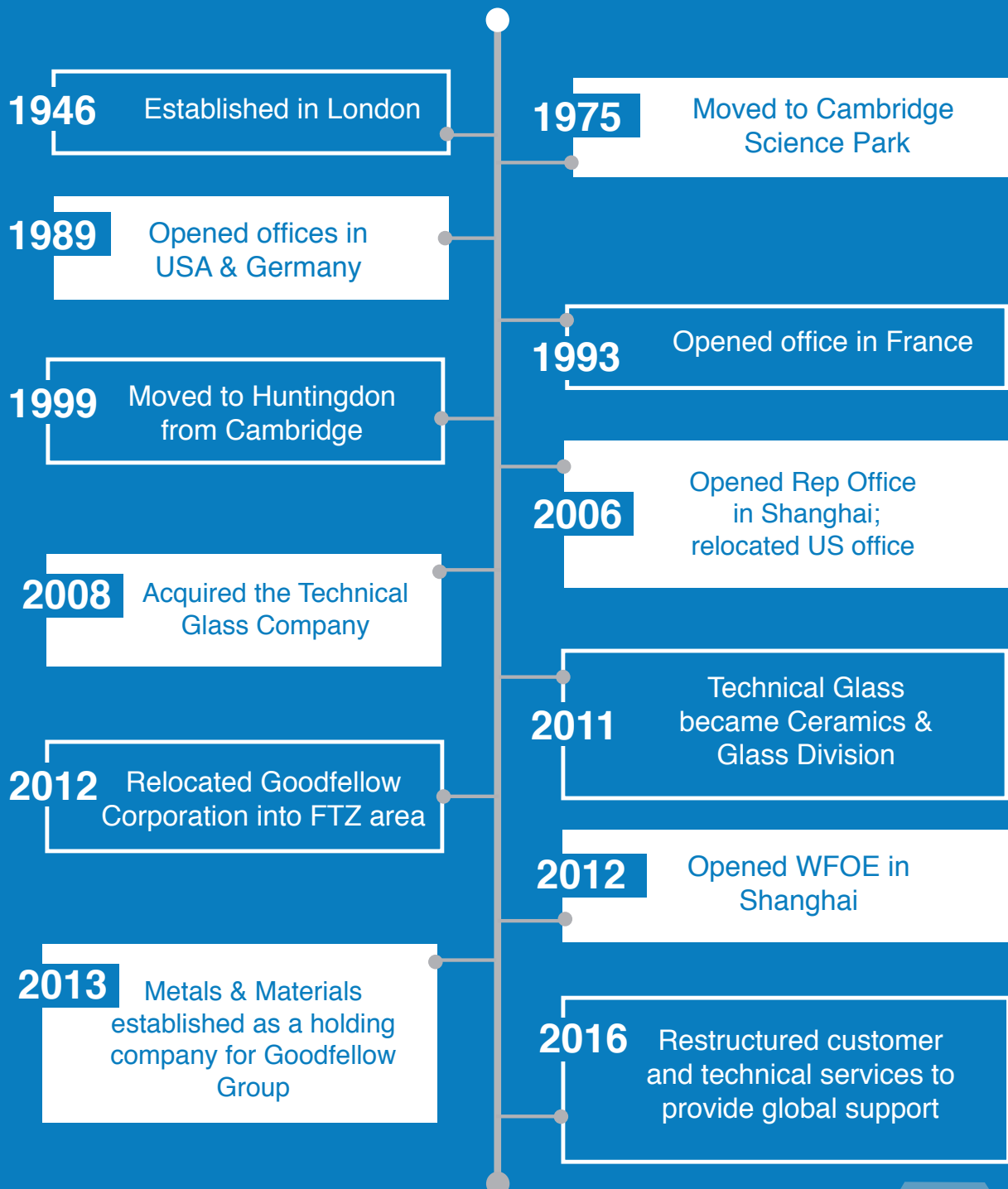


70 Years

of materials innovation for research and prototyping

Goodfellow supplies a comprehensive range of Metals, Alloys, Ceramics, Polymers, Compounds, and Composites to the research and industrial markets.

Goodfellow was established in the City of London in 1946. The Company now has associate operations in France, Germany, America and China.



THE *Goodfellow* ADVANTAGE

★
70
★
Years of facilitating
scientific
innovation ★

Leading global supplier of
metals, alloys, ceramics, glasses,
polymers, compounds, composites



An extensive range of

70,000

Catalogue Products



Most Subject To
Free Delivery
within 48 hours

6,000

Customers supported
worldwide



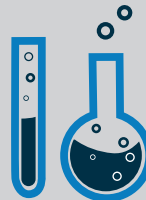
We offer a range of
bespoke
processing
services



No minimum
order quantity
Order any quantity
you require



All of our products are
underpinned by the
most rigorous quality
accreditations



An In-house team of
scientists
& **engineers**
with extensive
knowledge

Materials

Goodfellow is widely accepted as being the premier supplier of materials for research, development, prototyping and specialised manufacturing.

Through many years experience of dealing with the research community, we have built up a large materials' knowledge base which we use to help support our customers.



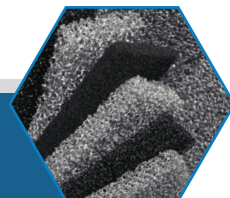
Alloys

Alloys are mixtures of a metal with other elements, the precise combination being governed by the required properties. They are generally considered to be metallic in nature and so have good thermal and electrical conductivities. Goodfellow provides a comprehensive range of alloys.



Metals

A metal is generally considered to be a pure element which readily forms cations. Goodfellow supplies virtually all of the pure metals from Aluminium to Zirconium. There are a variety of forms available including rod, wire and foil. Custom-made items are also available.



Ceramics

Ceramics are non-organic, non-metallic materials which show excellent resistance to high temperatures, abrasives and chemicals. Goodfellow offers a carefully chosen range of ceramic materials that includes both established and more recently developed products. All are available as either standard or custom-made products in a variety of forms and sizes.



Polymers

A carbon based material which is built up from a series of smaller units (monomers). The monomer choice and the final modular weight or size of the polymer govern the mechanical and physical properties of the end product. Goodfellow supplies a broad range of polymers that includes both familiar and more recently developed materials.



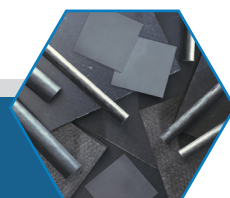
Compounds

Often referred to as chemical compounds, these are reaction products composed of two or more elements in definite proportions by weight and, as such, their composition is independent of their manner of preparation. Goodfellow supplies a wide range of aluminides, borides and silicides as well as other intermetallics and compounds with many of these custom-made to order.



Composites

Composites comprise a range of materials which provide improved mechanical properties when compared to their base counterparts. These properties include strength, thermal conductivity, abrasion or creep resistance and dimensional stability. Many of these are custom manufactured and can be quoted for by Goodfellow according to customer requirements.





Key Industry Sectors

Goodfellow has the experience and expertise to supply materials to many different industry sectors, each with its own unique characteristics.

Physics

Research into the basic forces of nature requires access to a vast number of materials in many forms. With over 500 materials in 32 forms, as well as specialised optical components, Goodfellow conveniently provides that access to physicists worldwide.

Electronics

With an extraordinarily wide range of semiconductor materials, advanced ceramics, and vacuum products – as well as graphene in an ever-increasing number of forms – Goodfellow is well positioned to supply both electronics designers and manufacturers.

Chemistry

Almost 70 elements of the Periodic Table are found in Goodfellow's inventory, most in multiple forms. Also of special interest to chemists is a wide selection of crucibles as well as substrates for cell growth and catalyst support.

Aerospace

Pure metal foils, advanced ceramics, refractory metals and fasteners, metal and ceramic foams, magnetic shielding alloys, and optical coatings are just a few of the items offered by Goodfellow to the demanding aerospace industry.

Manufacturing

Goodfellow technical specialists provide expert advice on material selection as well as fabrication of a product or component to precise customer specifications – in quantities from a single prototype to production runs.

Material Sciences

Discovering or designing new materials shapes the future of technology. With 70,000 catalogue products, ready access to specialist materials, and an in-house team of scientists and engineers, Goodfellow supplies the tools for scientific innovation.



HEAD OFFICE

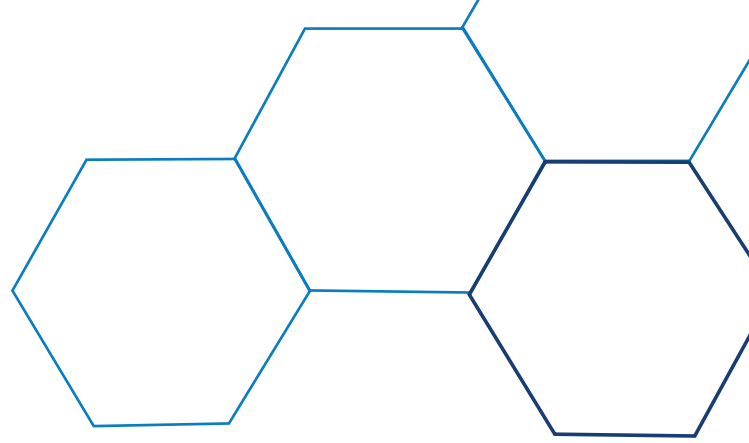
Goodfellow Cambridge Limited
Ermine Business Park
Huntingdon, PE29 6WR
England

Tel: 0800 731 4653 (UK)
or +44 1480 424 800

Fax: 0800 328 7689 (UK)
or +44 1480 424 900

info@goodfellow.com

www.goodfellow.com



USA

Goodfellow Corporation

Tel: 1 800 821 2870 (USA)
Fax: 1 800 283 2020 (USA)

info@goodfellowusa.com
www.goodfellowusa.com

THE PEOPLE'S REPUBLIC OF CHINA

Goodfellow (Shanghai) Trading Co., Ltd.

Tel: +86 21 6112 1560
Fax: +86 21 6130 4901

china@goodfellow.com
www.goodfellow.cn

FRANCE

Goodfellow SARL

Tél: 0800 917 241 (numéro vert)
ou +44 1480 424 813
Fax: 0800 917 313 (numéro vert)
ou +44 1480 424 900

france@goodfellow.com
www.goodfellow.fr

JAPAN

Goodfellow Cambridge Limited
c/o Intralink Japan

Tel: +81 3 5579 9285
Fax: +81 3 5579 9291

info-jp@goodfellow.com
www.goodfellow-japan.jp

GERMANY

Goodfellow GmbH

Tel: 0800 1000 579 (freecall)
oder +44 1480 424 810
Fax: 0800 1000 580 (freecall)
oder +44 1480 424 900

info@goodfellow.com
www.goodfellow.com

For representatives in other territories, please consult our website at

***Goodfellow*.com**